

Installation Instructions

1. Heater and accessories:



Power cable

Three-core Cable



2. Installation tools and accessories:

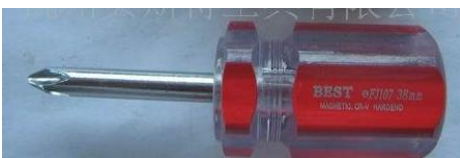
Spanner

Hammer

“-“ type Screwdriver



“Y” type Screwdriver



Expansion Bolt (M8*60)



Screw (M8)



Electric Drill



Scissors



Ruler



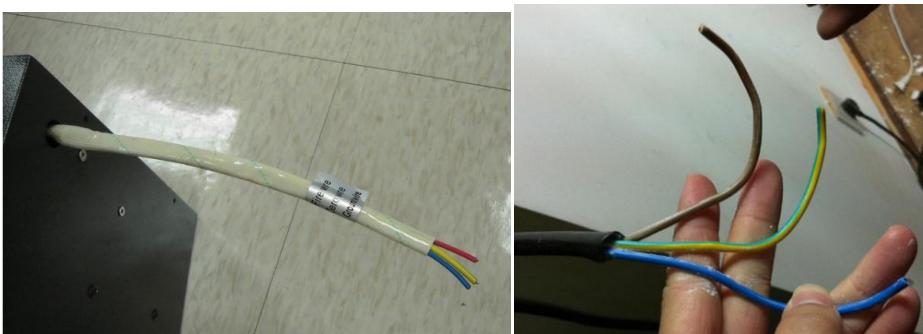
Pencil



Note: It is important to cooperate with our customs, to finalize the heater location.

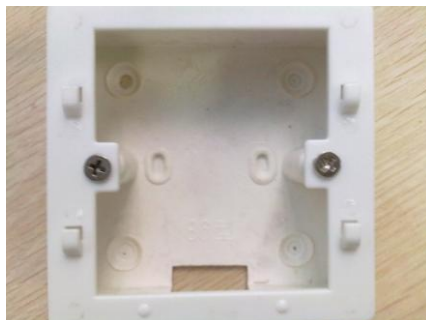
3. Wiring:

(1) Open heater by “Y” type sawdriver, connect power cable to heater

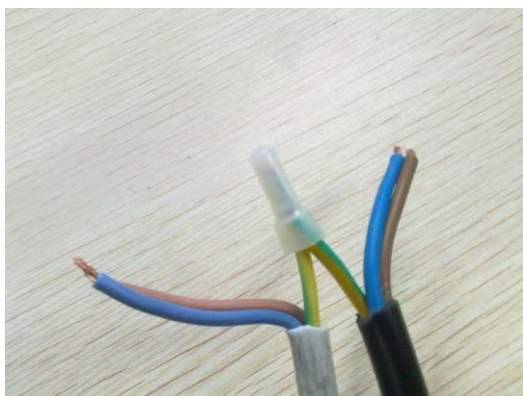


(2) Connect power cable and three-core cable to temperature controller

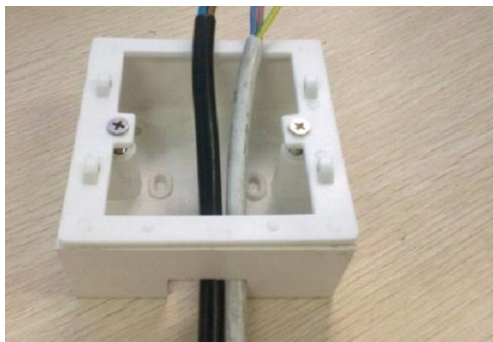
Fix the installation board with 2pcs M4*20 screw.



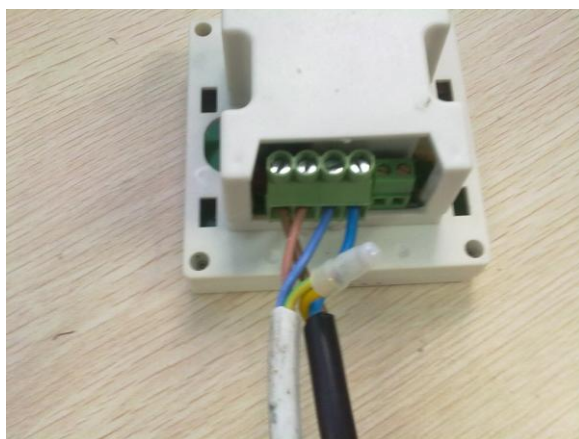
Put two earth wires together by a nipple line pressing cap



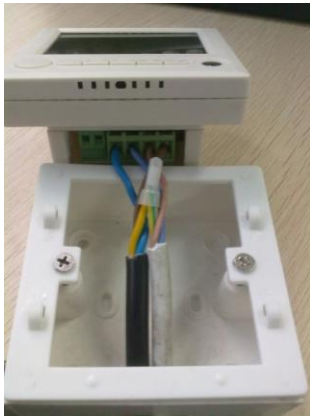
Put all wires inside the installation board



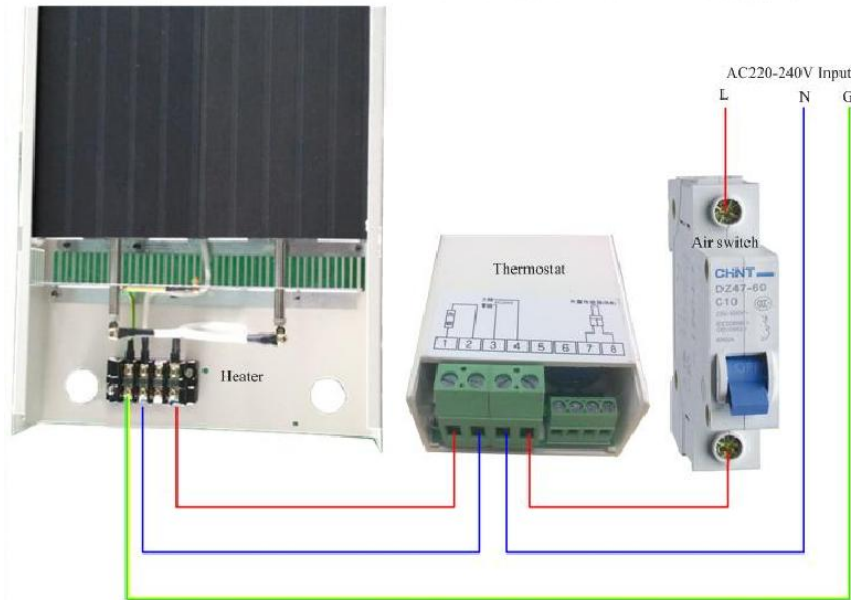
Connect other 4 wires like the following picture



Put controller in the installation board, and connect them together



(3) Connect heater, controller together to the power supply



4. Heater Installation

Install the two brackets (connect to the heater) first



Measure the size of each side



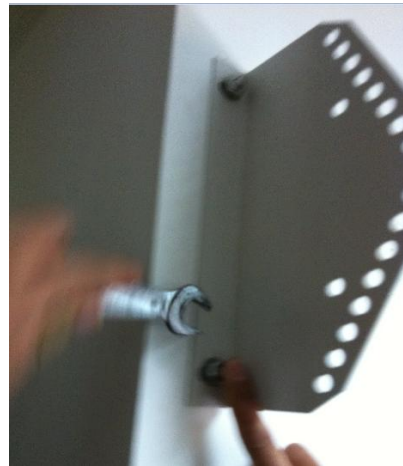
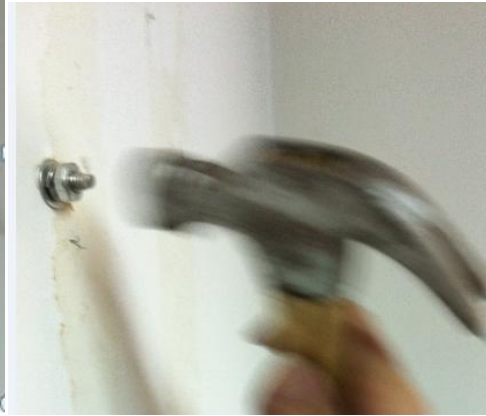
Finalize the place to install heater, remember the size measured just now, and then draw 4 marks on the wall



Drill 4 holes on the marked place



Each hole needs one expansion bolt, tight with nuts and spanner.



Connect heater to the bracket on the wall, tight all the screws.



Finish.

